

MPS Catalog Number:

S1 90 80 048 MX AL 031

Date:

01/24/2014

**END FITTINGS**

Tower End Fitting:

Eye (Forged Steel)

Line End Fitting:

Ball (Forged Steel) (ANSI 52-5)

**MATERIAL**

Corona Ring (Tower):

None

Corona Ring (Line):

None

Corona Rings are recommended for applications of 230 kV and above

Number of Sheds:

15 large 16 standard

Rod Diameter:

16 mm

Weight Estimate:

10.2 lbs 4.6 kg

**DIMENSIONAL VALUES**

Section Length (L):

60.2 in 1,529 mm

Rubber Length (X):

48.4 in 1,229 mm

Standard Shed Height (P1):

1.5 in 38 mm

Large Shed Height (P2):

2 in 51 mm

Projection Ratio (S/P):

- 1.5

Shed Spacing (S):

3 in 76 mm

Dry Arc Distance:

50.7 in 1,288 mm

Leakage Distance:

140.1 in 3,559 mm

**ELECTRICAL VALUES**

60 Hz Dry Flashover:

497 kV Min. Withstand: 459 kV

60 Hz Wet Flashover:

443 kV Min. Withstand: 386 kV

Pos. Critical Impulse Flashover:

849 kV Min. Withstand: 739 kV

Neg. Critical Impulse Flashover:

898 kV Min. Withstand: 789 kV

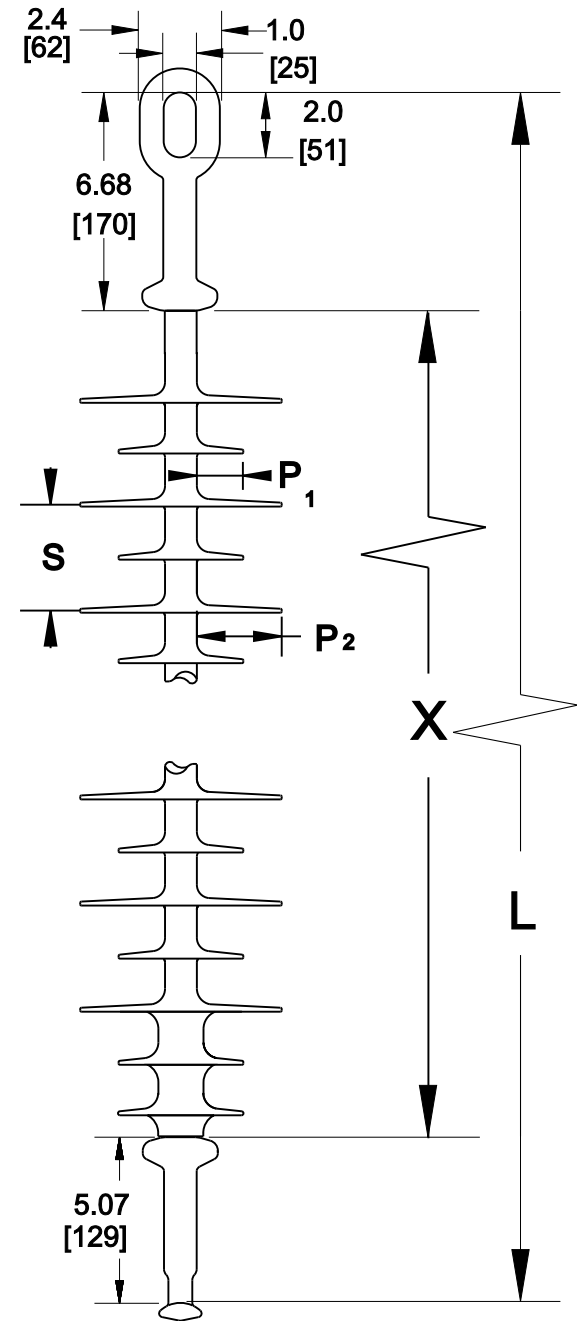
**MECHANICAL VALUES**

Specified Mech. Load (SML):

25,000 lbs 111.2 kN

Routine Test Load (RTL):

12,500 lbs 55.6 kN



This drawing contains confidential information that is property of MacLean Power L.L.C ('MacLean'). Use of MacLean's confidential information without MacLean's express written consent is strictly prohibited and may expose you to legal liability. If you believe that you received this material in error, please destroy it or return it to 'MacLean Power, L.L.C., 7801 Park Place Rd, York, SC, 29745, USA.'

Dimensions: inches [millimeters]

Note: Drawing not actual depiction of insulator appearance

Silicone Rubber Sheath & Sheds  
Complies with applicable ANSI and IEC standards.